

REQUALIFICATION OF THE VICENTINO QUARTER

2018-2019

Location

Cantanhede, Portugal

Client

Municipality of Cantanhede

Construction cost

1 635 416 EUR

Scope

Urban regeneration project of public spaces

Stages

Concept Design

Developed Design

Detail Design

Technical Assistance

Area

6800 m² (site area)

4705 m² (public space area)

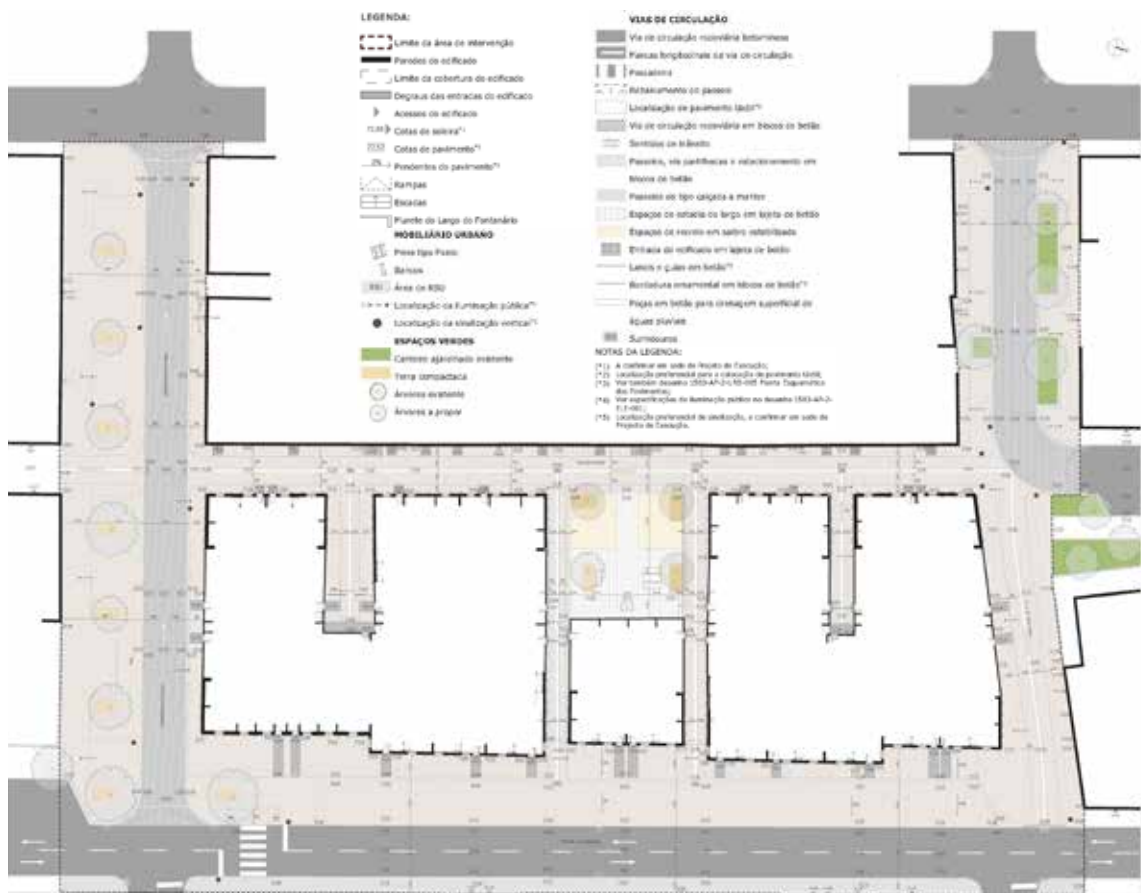
The project for the requalification of the Vicentino Quarter, in Cantanhede, has as its objective the improvement, reordering and requalification of the social buildings and the surrounding public space. The intervention aims to strengthen the insertion of the Vicentino Quarter, in order to improve the quality of life of the resident population, foster their integration and promote social cohesion.

The requalification of the public space around the Quarter includes repairs on public streets and the remodelling of infrastructure networks to be installed underground.

The area of intervention in the public space corresponds to about 4705 m², and the area of requalification of the surrounding public space includes the channels of circulation that surround the Quarter, the square located in the center and the sections of side roads to the block to the west of the Quarter.

Located in the southern part of the city of Cantanhede, the Vicentino Quarter, although separated from the historical centre of Cantanhede, is in itself a small historical record. It originated in a charitable action of the Heritage of the Poor of the Parish of Cantanhede, a charitable institution of the Catholic Church.

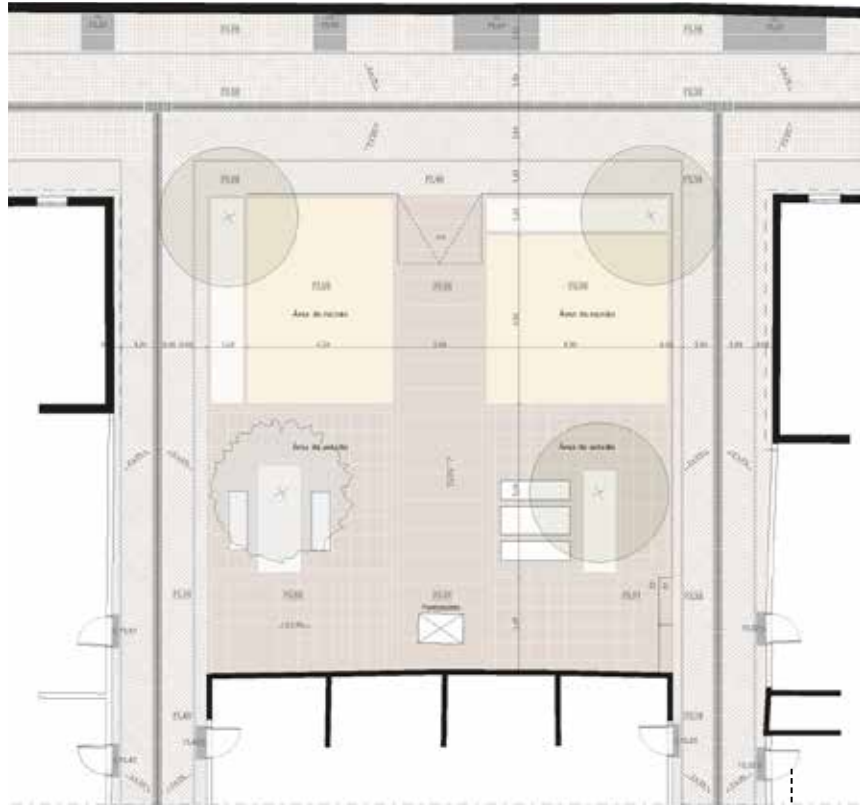
GENERAL PLAN OF THE INTERVENTION



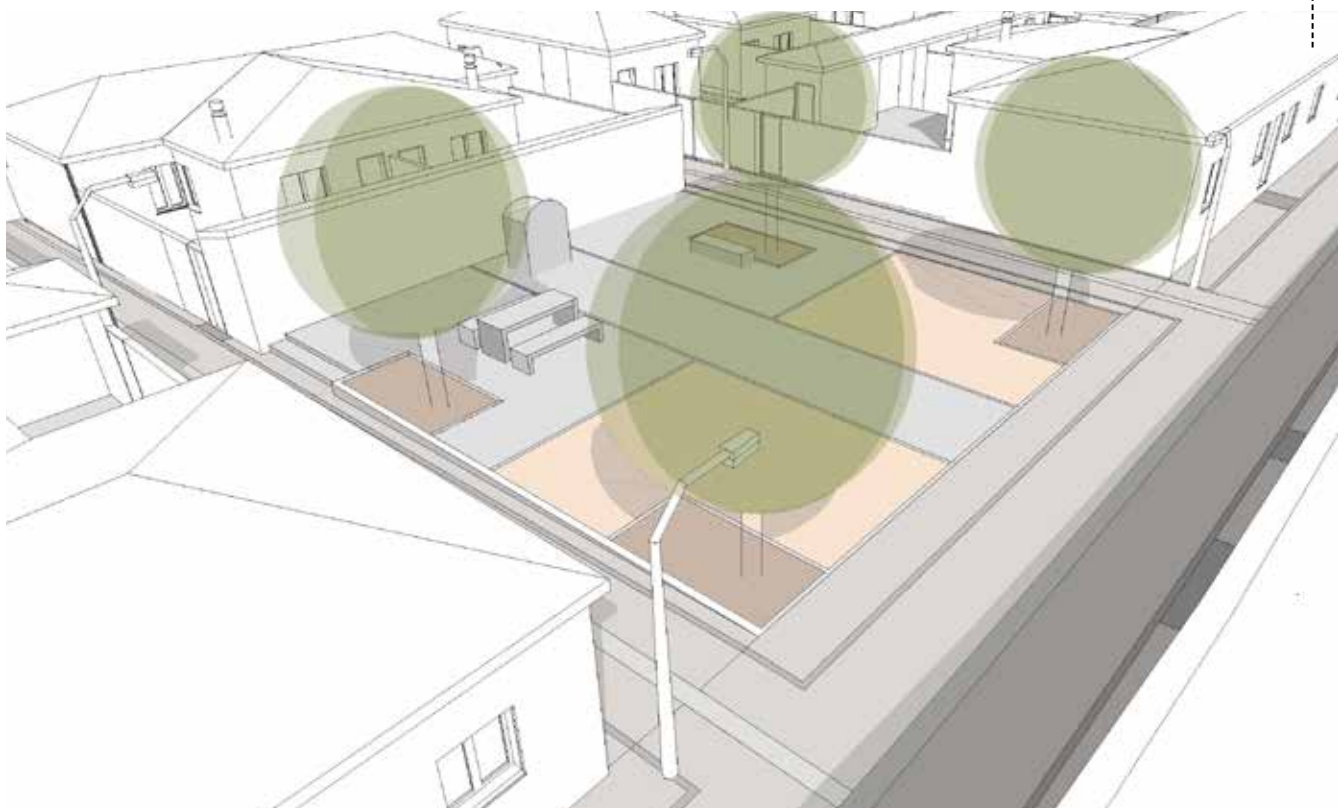
Since its inception under the management of the Society of St. Vincent de Paul of Cantanhede, it has now passed on the legacy to the Municipality, helping people and families in need by providing accommodation.

The proposal for the requalification of the public space is based on the following principles:

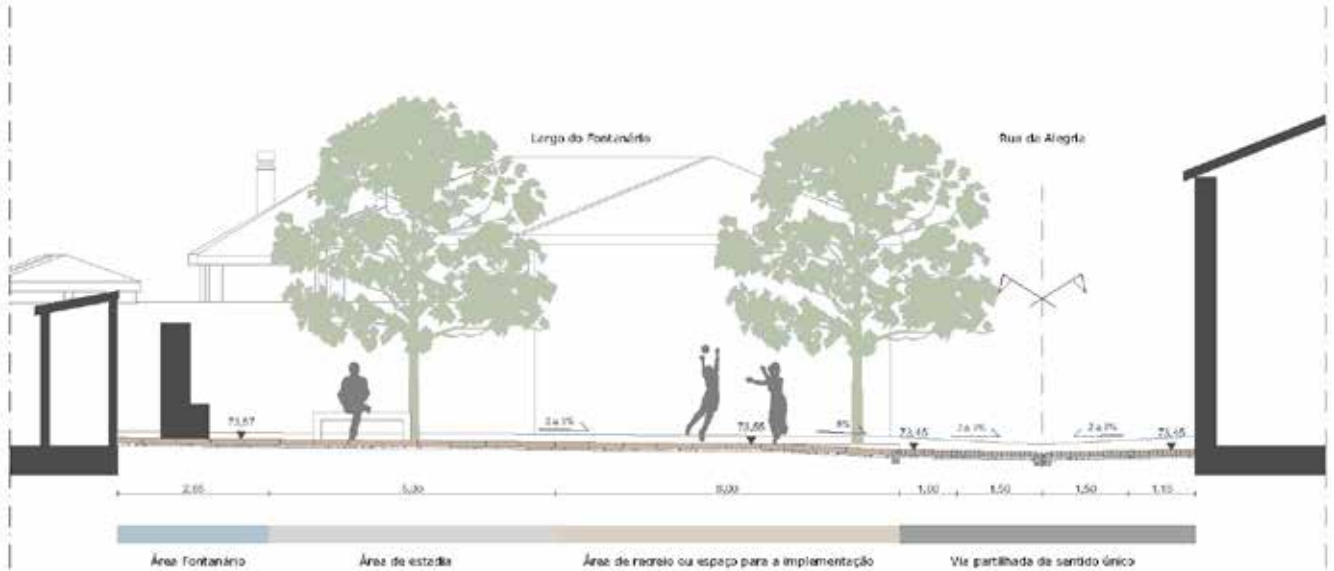
- adaptation of the public space to the salubrious experience of the neighborhood;
- appreciation of the importance of historic Moment and Action;
- valuing the public space through the creation of a space with identity, organized, and easy to live;
- redefinition of all road access, giving priority to pedestrian traffic and universal accessibility;
- requalification of public space, enabling it to integrate different occupations;
- dignification of Largo do Fontanário;
- improvement of the general conditions of safety, use and access to public space;
- minimisation of maintenance needs, through design options and construction solutions.



ZOOMED PLAN FROM LARGO DO FONTANÁRIO



3D PERSPECTIVE FROM LARGO DO FONTANÁRIO



LARGO DO FONTANÁRIO CROSS-CUT PROFILE

As a starting point for the implementation of these principles and objectives, it was considered as structuring the redefinition of the circulation scheme and the reorganization of the public space, through the following interventions:

- regularisation of paving and introduction of a system of shared tracks;
- Regularization of pavement elevations;
- changing the type of urban traffic, in particular from a alley to a shared lane, taking over road traffic safely, and improving the health conditions relating to the accumulation of leaves on the roofs of buildings in the neighbourhood, caused by the proximity and species of existing trees;;
- introduction of a stereotomy on the pavement, integrating a characteristic edge of the public spaces in the centre of Cantanhede (in the case of the shared streets, introduced in the neighbourhood area, delimits the preferred lane for pedestrian traffic), while keeping costs to a minimum;
- alignment of track sections with contiguous track sections outside the area of intervention;
- regularisation of the size of the tree surrounds, taking into account the conditioning of existing tree species.

The design of Largo do Fontanário (Fountain Square) adopted, as a principle, the dignification of the public space for the

functions of stay and leisure, and of the fountain itself. In addition to its function as a public space for stay and leisure, this area serves the patios of the houses that surround it and integrates the paths of pedestrian transition between street of Alegria and street Dr. Silva Pereira.

In this way, the design intends to give expression to the creation of a strong alignment in the creation of the space up to the Fontanário, showing on the pavement the different spaces of circulation, of stay and of the different functions. Two living spaces were established for the inhabitants, with the implantation of urban furniture, namely benches and picnic tables, and two free playgrounds were created, for the possible implantation of maintenance equipment (geriatrics).

Two living spaces were established for the inhabitants, through the installation of street furniture, namely benches and tables for picnics, and two recreational spaces were created, free of equipment, where it is possible to install maintenance equipment oriented to the elderly.

RUA DA ALEGRIA CROSS-CUT PROFILE

