

CAMPO GRANDE 70 RESIDENTIAL BUILDING

2016–(2021)

Location

Lisbon, Portugal

Client

A1V2 Imobiliária

Estimated Cost

3 320 000 EUR

Stage

Scheme design,
Detailed design

Area

4550 m²

Located in Campo Grande, in a 358 m² land lot, the Campo Grande 70 apartment building is a new construction intended to replace two pre-existing buildings in advanced state of degradation.

Its privileged location in one of the noblest central areas of Lisbon determined a conceptual exercise that privileged the proper integration and contextualisation of the building in its urban surroundings. On the other hand, the location influenced the promotion and establishment of the building as a contemporary architectural piece that improves and upgrades its surroundings.

Following the applicable Portuguese legislation, the adjacent buildings determined the general shape and implantation of the new building. Considering the surroundings and the dimensions of the land lot available, the formal characterisation stands out especially for the plasticity of its facade, for its balconies and incorporated decorative elements.

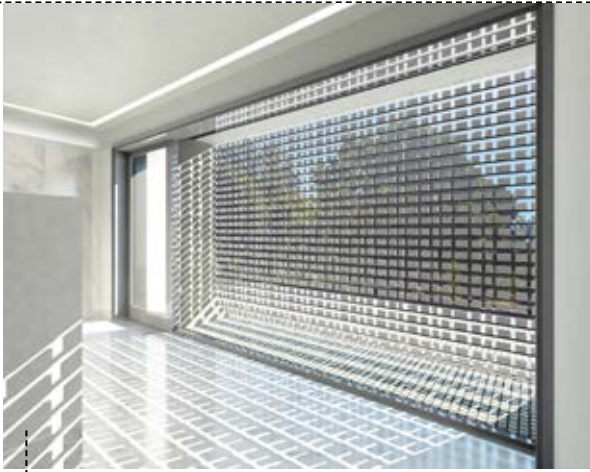
The building develops along fourteen floors, eleven above ground and three under, accommodating a total of ten apartments – namely, two-, three- and four-bedroom apartments.

MAIN FRONT



MAIN FRONT





FLOOR 0
ENTRANCE HALL OF THE BUILDING



FLOOR -1
CAR PARKING

The ground floor includes a shop and access to the three underground floors, dedicated to car parking for the residents with a car lift system.

Facing the gardens of Campo Grande, the main front stands out for its wide balconies featuring a custom steel grid, whose formal and material design sought to streamline and highlight the facade. More than just decorative, this grid enables sunshine control for the balconies and social areas of the apartments in the building (kitchens and living and dining rooms).

The exterior of the ground floor is characterised by a cover of white limestone cubes that pick up and extend the effect of the street pavement. This effect is meant to be a differentiating, original element that takes advantage of a typical Portuguese construction element – the Portuguese pavement. Its application on the street pavement and on the walls of the main front at the ground floor thus pays homage to the art and materiality of these elements.

On the tenth floor, the top residential floor, the steel grid on the exterior walls was prolonged, strengthening this materiality and setting this floor apart from the others.

FLOOR 1
FOUR-BEDROOM HOUSE PLAN



FLOOR 9
TWO-BEDROOM DUPLEX LIVING ROOM

