

PORTANORTE – RECREATION AND LEISURE PARK

2008

Location

Bragança, Portugal

Client

Municipality of Bragança

Estimated Cost

12.1 million EUR

Stage

Detailed Design

Area

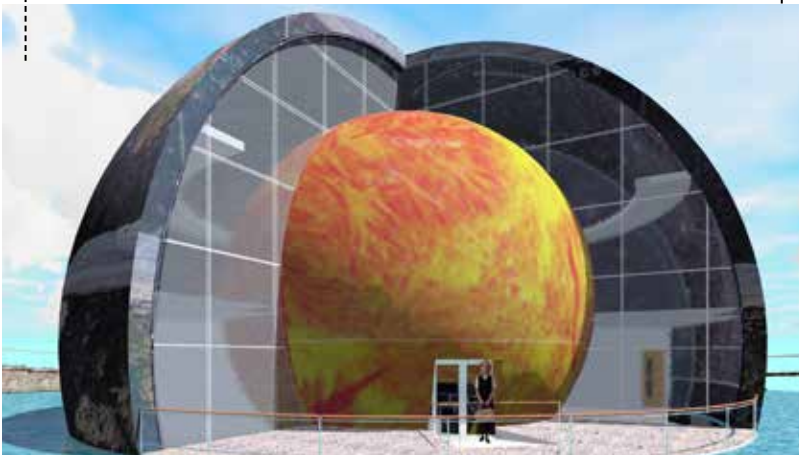
12 ha

The PortaNorte project was located on the periphery of the Bragança urban grid, in an area of relatively rural characteristics that perfectly matched the establishment of this recreation park.

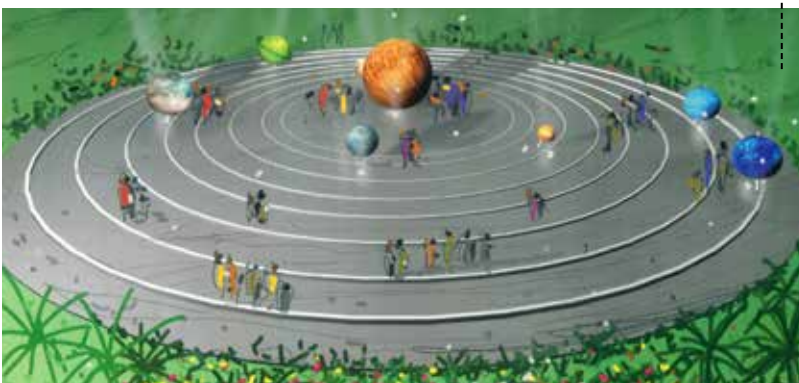
Nature, tradition, education, leisure and sports were themes that were developed and implemented in spaces throughout the park that were linked by networks of thematic footpaths.

Throughout the complex, the motif of nature was developed in an architectural proposal that was intrinsically connected to the morphology of the terrain. For this reason, we opted to edify nearly exclusively on the area of the Planetarium and Central Square, giving it a natural and even typically regional image.

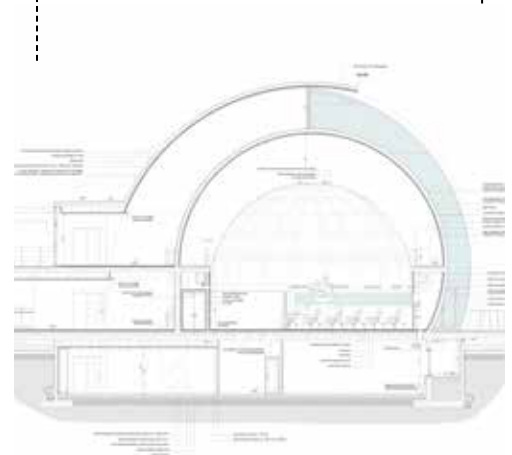
EXTERIOR VIEW OF THE PLANETARIUM



GARDEN OF THE PLANETS

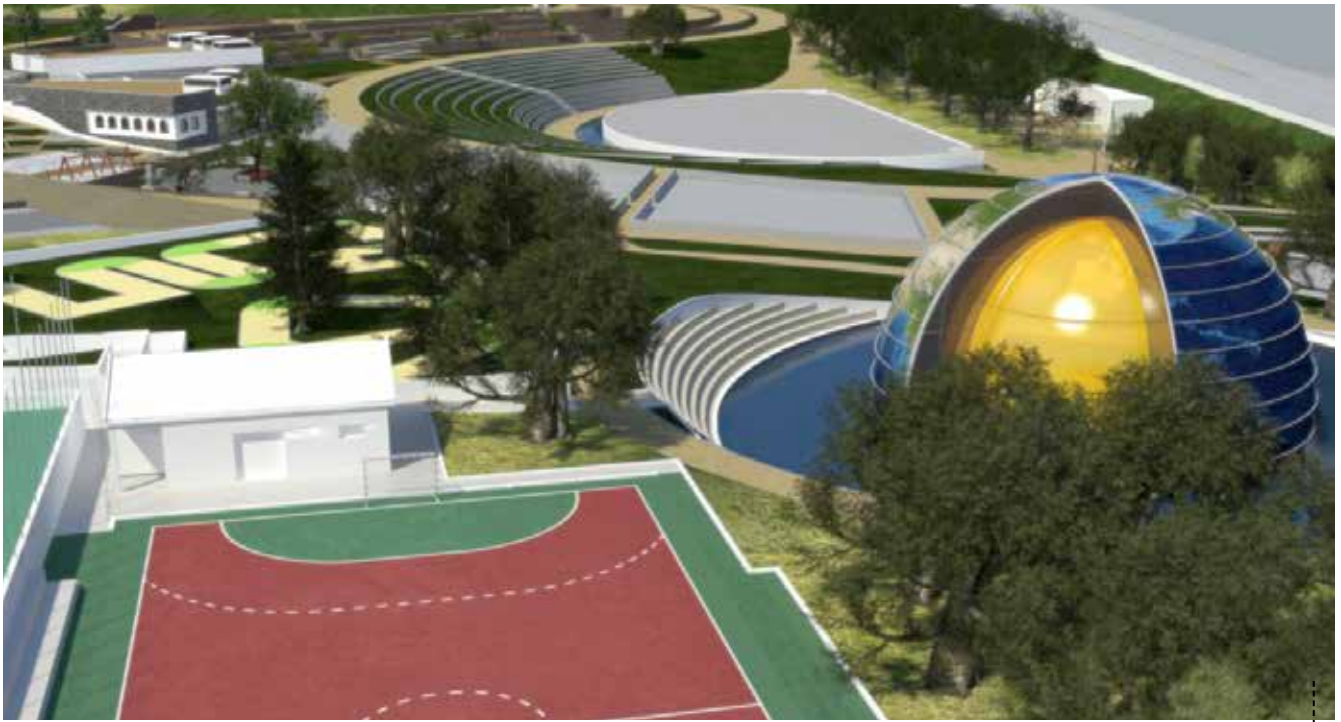


CROSS-SECTION OF THE PLANETARIUM



PLAN OF THE OPEN AIR AMPHITHEATRE





PARTIAL VIEW OF THE COMPLEX

We created a dynamic, rolling surface, which followed the accentuated slopes of the terrain, supporting the plantation of various regional species and showcasing the features of the north of Portugal.

The goals set for this park were related to the desire to create a space with an identity that matched the richness of this region of Portugal, a mirror for the most important patrimonial resources of the Alto Douro and the Terra Fria of Trás-os-Montes, a stage in which to display

tradition, the food, the ethnographic elements, the patrimonial resources, the border character of the land, among others—in other words, a park that took into account the socio-demographic fabric of the region.

The guiding premise of this park was the creation of a multifunctional space, eminently natural, organic and thematic. A1V2's goal was to preserve the original features of the landscape, harmoniously integrating and articulating the new spaces and proposed buildings into it.

CENTRAL SQUARE

