

VILLA IBRAHIM

2015

Location

Doha, Qatar

Client

Private

Estimated Cost

415 000 EUR

Stage

Detailed design and construction supervision

Area

660 m²

The project entailed the rehabilitation of an existing two-storey villa in the coastal area of Doha, Qatar. The house has two main facades, one where the main access to the house is located (to the southeast) and another with access to the beach (to the northwest), as well as two lateral elevations that articulate with contiguous lots and houses.

The design contemplated the expansion of the house towards the beach and the introduction of an additional storey, increasing the house's footprint and net area.

The changes to the southeast main access facade are minimal, maintaining the house's urban image, while the northwest front is completely altered to establish a narrower relationship with the beach, in particular through the inclusion of large glazed panels.

On the main access side, the area is to be repaved, creating flower beds in articulation with the facade and with the outer boundary of the house. On the beach side, the project includes the creation of a new swimming pool, garden, barbecue and pergola, which soften the relationship between the new facade and the beach and allow the enjoyment of the improved outdoor space.

NORTHWEST FACADE WITH ACCESS TO THE BEACH





LIVING ROOM

The existing staircase connecting the floors is moved to the facade facing the beach and a new lift is installed. This shift allows the interior of the house to be reorganised, optimising the use of space.

The ground floor includes common areas, such as an entrance hall, office, living and dining rooms, social bathroom, kitchen and spaces for the work staff. The largest social areas on this floor, living and dining rooms, benefit from their relation with the renovated outdoor spaces with pool, garden, barbecue and beach.

The first floor has four bedrooms, all with closet and private bathroom, as well as a central sitting area for family gatherings and smaller meals, made possible by the small kitchenette located at the top of the space. This area also serves as a distribution zone for the rooms.

The proposed second floor features an entrance hall, a leisure space with a small kitchenette, a guest bedroom, a toilet and shower area, as well as a large storage space. This leisure space opens to the exterior, with a pergola, a barbecue and a small garden.

BATHROOMS



VILLA IBRAHIM

2015

Location
Doha, Qatar

Client
Private

Estimated Cost
N/A

Stage
Detailed Design

Area
N/A

The present design focused on the expansion and structural reinforcement of a residential building in the city of Doha, Qatar.

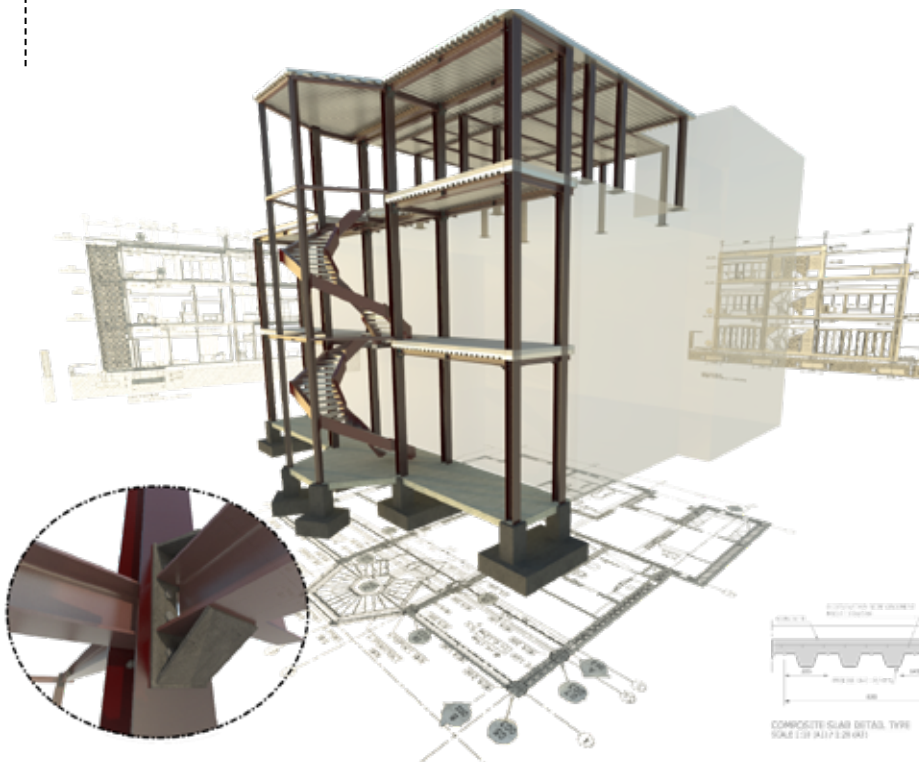
The refurbishment of the building included its expansion and the addition of a new storey above. The expanded area encompasses three floors, prolonging them through a new horizontal structure fixed to the respective slabs. The structure for the new top floor was fixed to the existing slab.

These structures were designed in steel portal frames with composite slabs. The interior staircase also adopted a steel solution.

There was a partial remodelling on the inside of the building that required structural reinforcement of the existing solid reinforced concrete slabs.

The proximity to the sea shore lessened the capacity of the soil to bear weight. Therefore, the foundations were designed in spread footings, uniformly distributing the load over the ground and minimising soil settling.

OVERVIEW OF THE DESIGN



STRUCTURAL MODEL (ROBOT)

